

# DELE

## Комплектующие

### Техническое описание

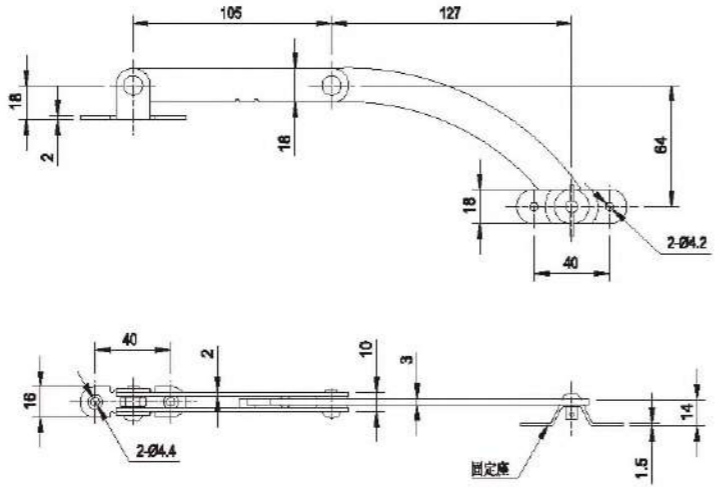
По вопросам продаж и поддержки обращайтесь:

Архангельск (8182)63-90-72	Калининград (4012)72-03-81	Нижний Новгород (831)429-08-12	Смоленск (4812)29-41-54
Астана +7(7172)727-132	Калуга (4842)92-23-67	Новокузнецк (3843)20-46-81	Сочи (862)225-72-31
Белгород (4722)40-23-64	Кемерово (3842)65-04-62	Новосибирск (383)227-86-73	Ставрополь (8652)20-65-13
Брянск (4832)59-03-52	Киров (8332)68-02-04	Орел (4862)44-53-42	Тверь (4822)63-31-35
Владивосток (423)249-28-31	Краснодар (861)203-40-90	Оренбург (3532)37-68-04	Томск (3822)98-41-53
Волгоград (844)278-03-48	Красноярск (391)204-63-61	Пенза (8412)22-31-16	Тула (4872)74-02-29
Вологда (8172)26-41-59	Курск (4712)77-13-04	Пермь (342)205-81-47	Тюмень (3452)66-21-18
Воронеж (473)204-51-73	Липецк (4742)52-20-81	Ростов-на-Дону (863)308-18-15	Ульяновск (8422)24-23-59
Екатеринбург (343)384-55-89	Магнитогорск (3519)55-03-13	Рязань (4912)46-61-64	Уфа (347)229-48-12
Иваново (4932)77-34-06	Москва (495)268-04-70	Самара (846)206-03-16	Челябинск (351)202-03-61
Ижевск (3412)26-03-58	Мурманск (8152)59-64-93	Санкт-Петербург (812)309-46-40	Череповец (8202)49-02-64
Казань (843)206-01-48	Набережные Челны (8552)20-53-41	Саратов (845)249-38-78	Ярославль (4852)69-52-93

TX80-1



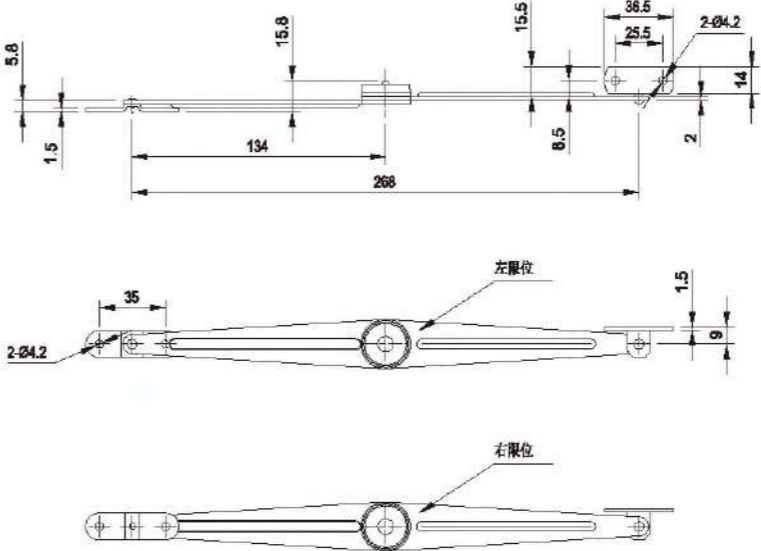
材 料：碳钢  
表面处理：镀铬  
备 注：调换固定座位置可实现左右开门  
Material: Steel  
Finish: Bright chrome plated.  
Remark: Adjust the place of the fixing base to open the door both left and right.



TX90-1



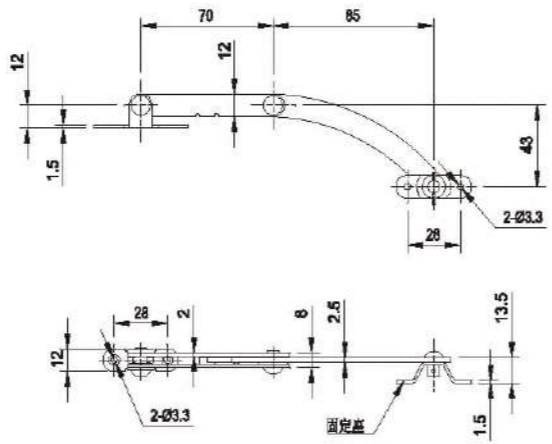
材 料：碳钢  
表面处理：镀铬  
备 注：调换固定座位置可实现左右开门  
Material: Steel.  
Finish: Bright chrome plated.  
Remark: Adjust the place of the fixing base to open the door both left and right.



TX80-2



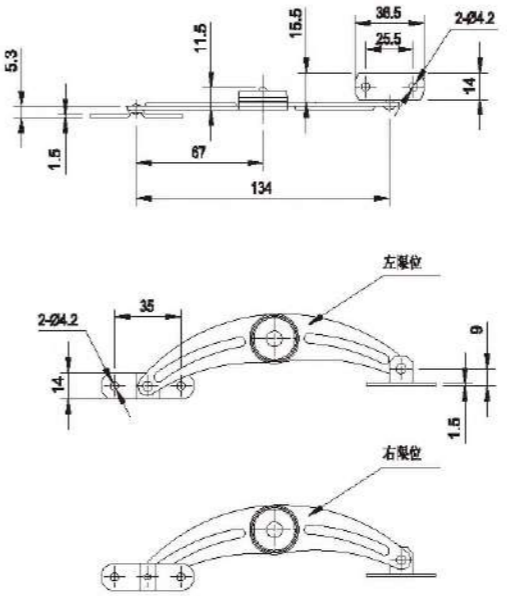
材 料：碳钢  
表面处理：镀铬  
备 注：调换固定座位置可实现左右开门  
Material: Steel.  
Finish: Bright chrome plated.  
Remark: Adjust the place of the fixing base to open the door both left and right.



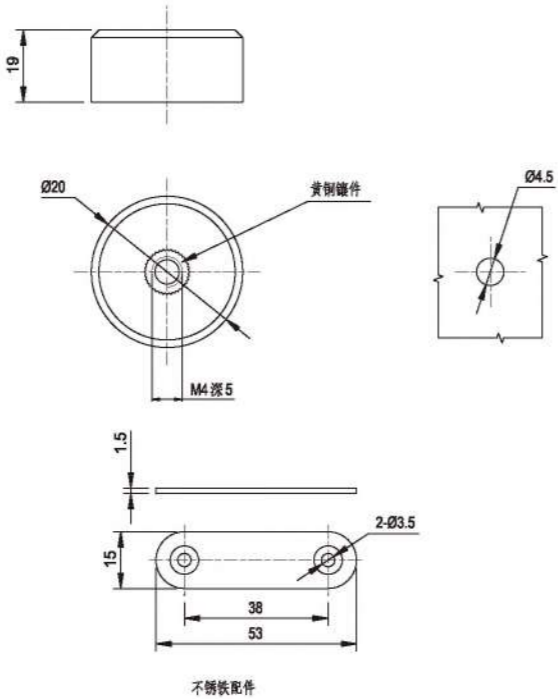
TX90-2



材 料：碳钢  
表面处理：镀铬  
备 注：调换固定座位置可实现左右开门  
Material: Steel.  
Finish: Bright chrome plated.  
Remark: Adjust the place of the fixing base to open the door both left and right.

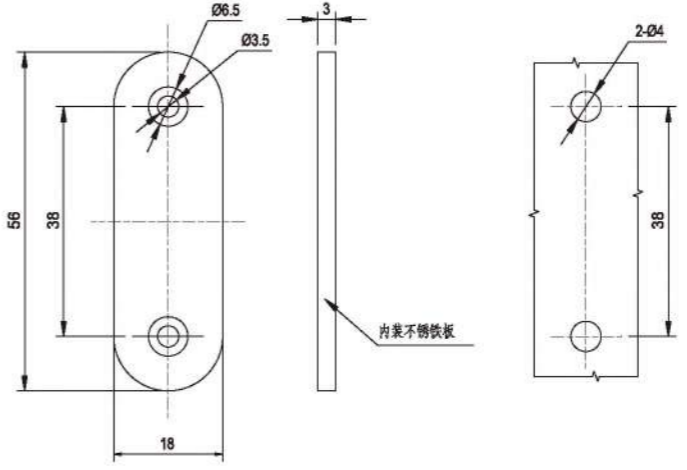


MX-01



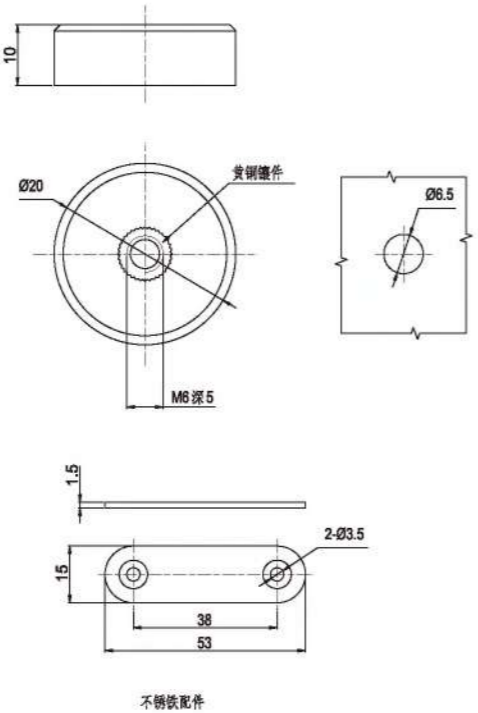
材 料：聚甲醛外壳、后盖板；铜磁件；  
铁钕硼强磁铁；不锈钢铁片。  
Material: Polyformaldehyde shell and back cover;  
Neodymium alloyed with iron and boron-NIB  
strong magnets; brass part; stainless steel steel parts.

MX-03



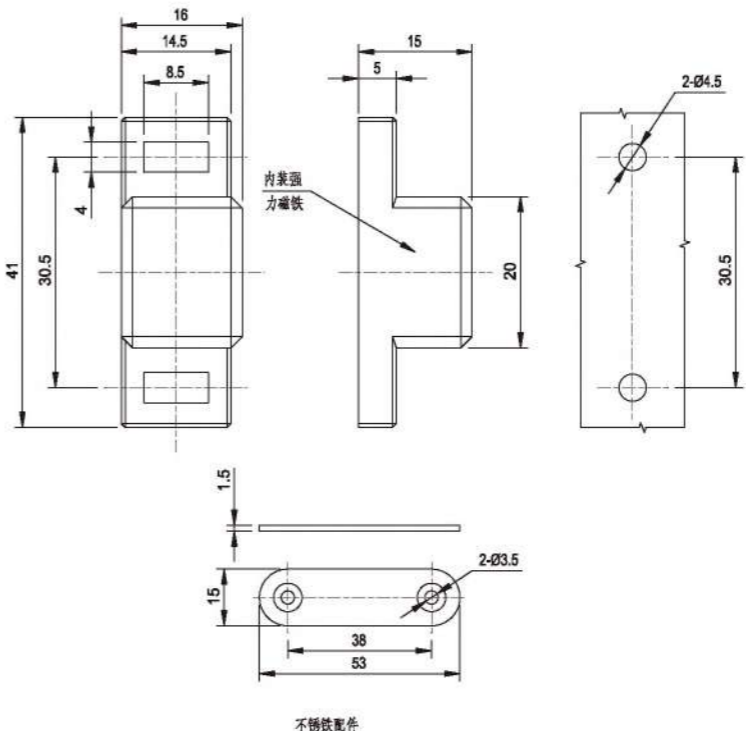
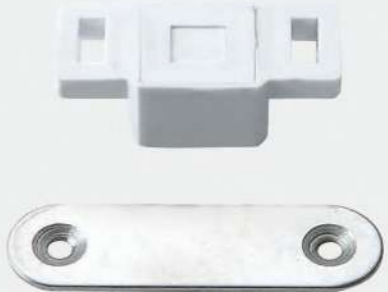
材 料：聚甲醛外壳、后盖板；不锈钢铁片。  
Material: Polyformaldehyde shell and back cover;  
Neodymium alloyed with iron and boron-NIB  
strong magnets; stainless steel steel parts.

MX-02



材 料：聚甲醛外壳、后盖板；铜磁件；  
铁钕硼强磁铁；不锈钢铁片。  
Material: Polyformaldehyde shell and back cover;  
Neodymium alloyed with iron and boron-NIB  
strong magnets; brass part; stainless steel steel parts.

MX-04

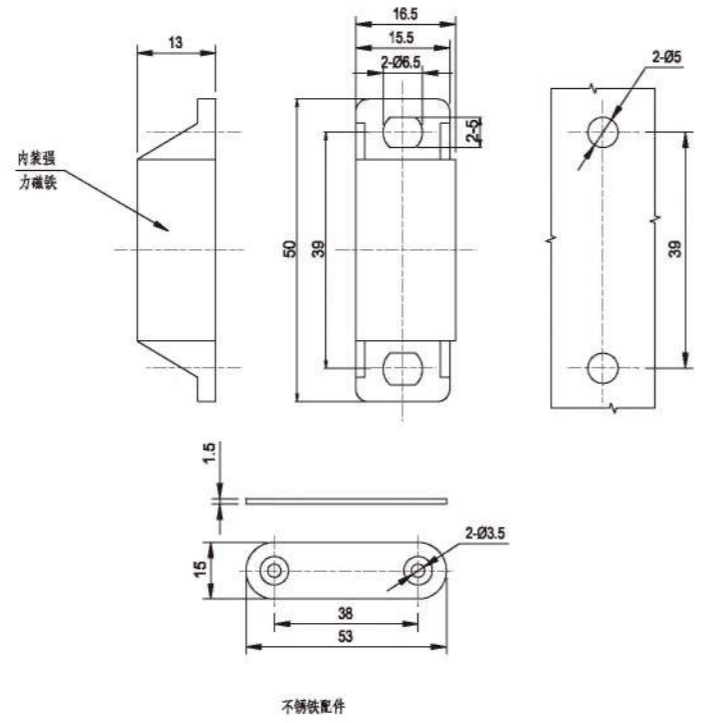


材 料：聚甲醛外壳、后盖板；不锈钢铁片。  
Material: Polyformaldehyde shell and back cover;  
Neodymium alloyed with iron and boron-NIB  
strong magnets; stainless steel steel parts.

MX-05



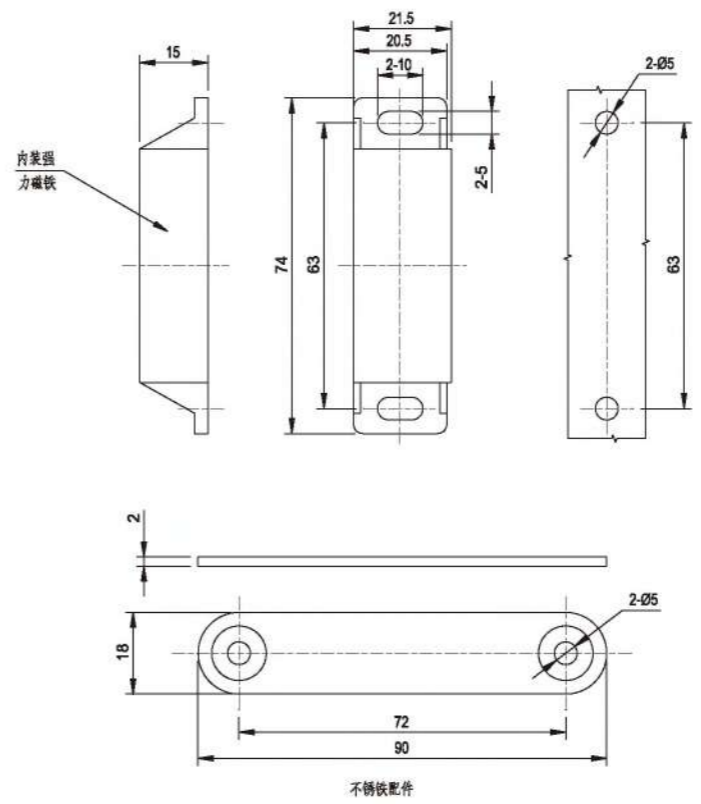
材 料：聚甲醛外壳、后盖板；铁钕硼强磁铁；不锈钢铁片。  
Material: Polyformaldehyde shell and back cover; Neodymium alloyed with iron and boron-NiB strong magnets; stainless steel steel parts.



MX-07



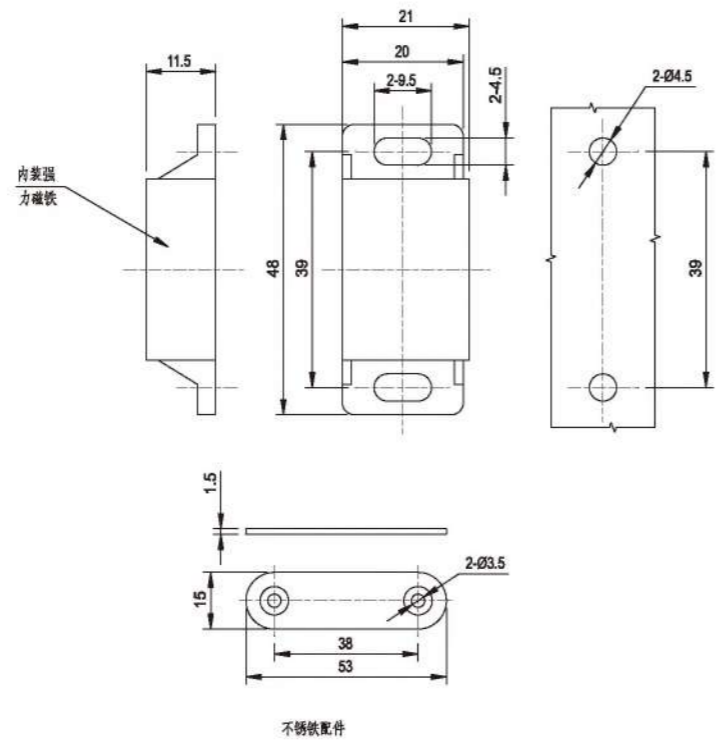
材 料：聚甲醛外壳、后盖板；铁钕硼强磁铁；不锈钢铁片。  
Material: Polyformaldehyde shell and back cover; Neodymium alloyed with iron and boron-NiB strong magnets; stainless steel steel parts.



MX-06



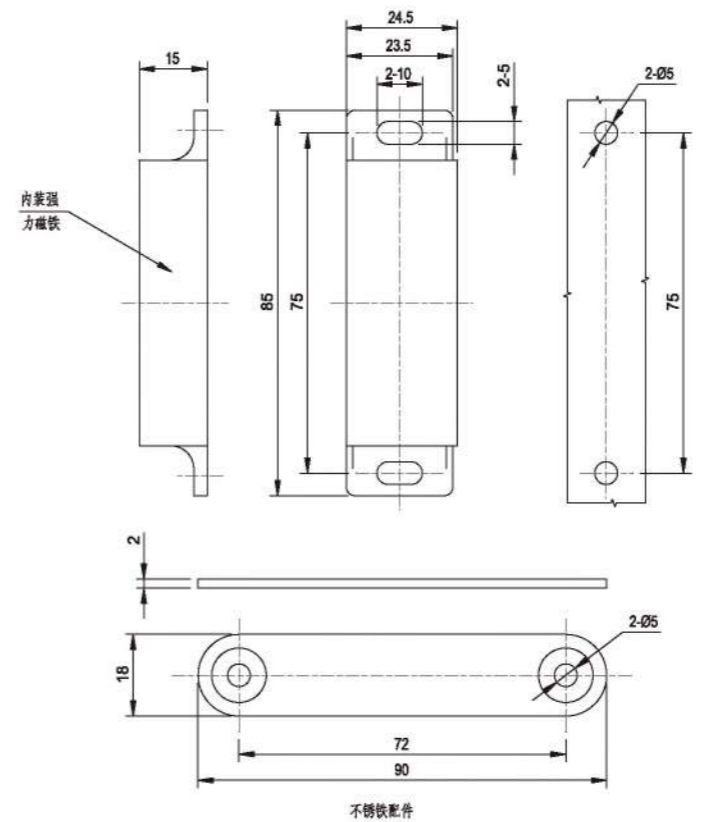
材 料：聚甲醛外壳、后盖板；铁钕硼强磁铁；不锈钢铁片。  
Material: Polyformaldehyde shell and back cover; Neodymium alloyed with iron and boron-NiB strong magnets; stainless steel steel parts.

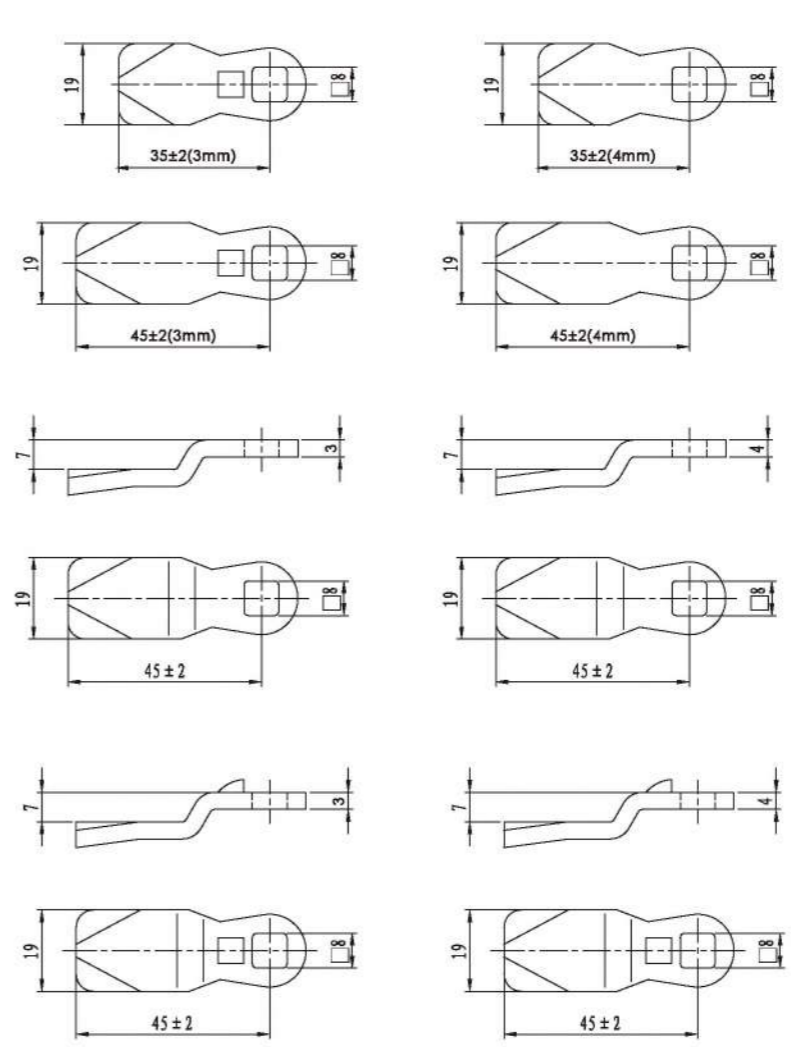
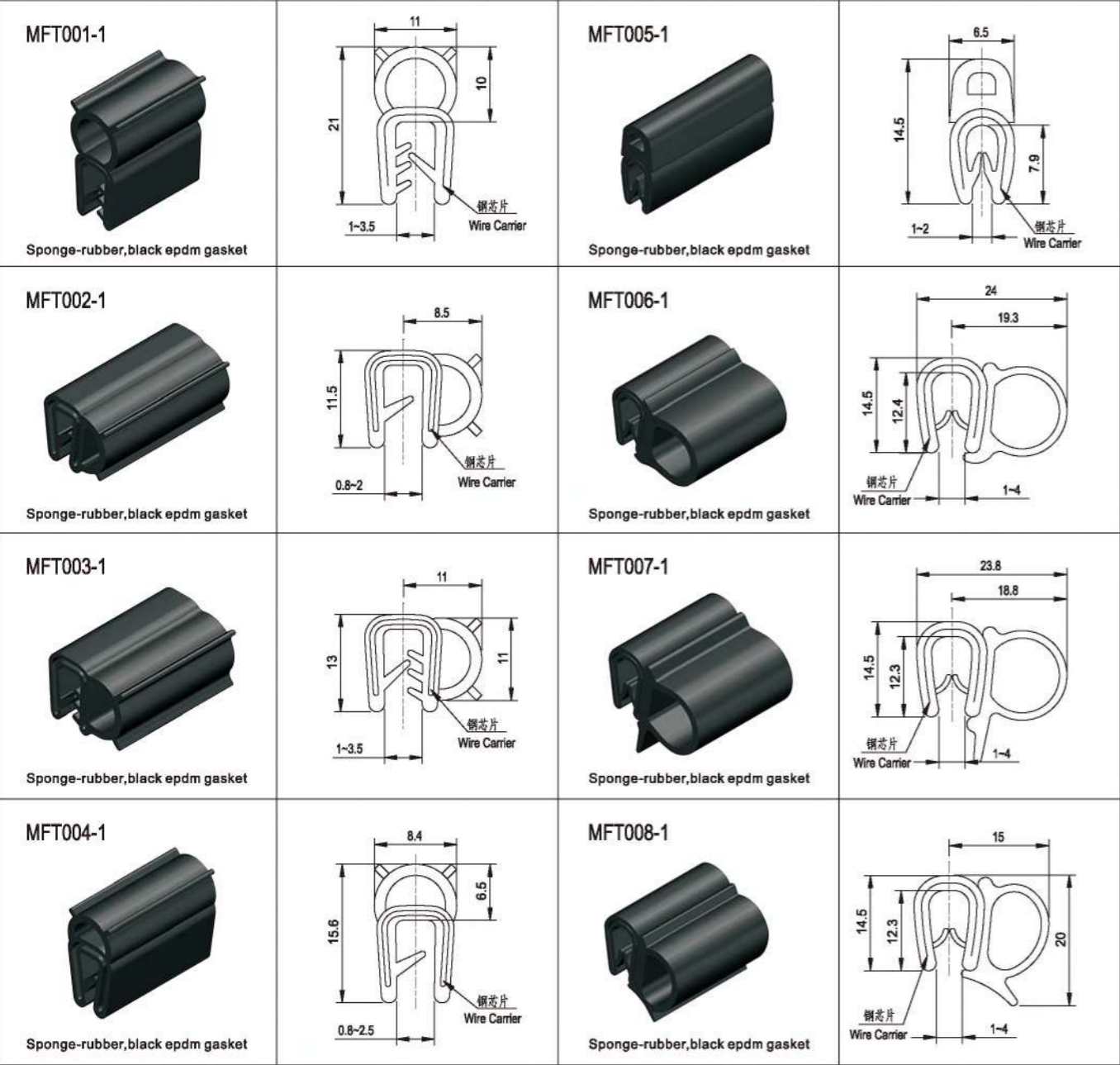


MX-08



材 料：聚甲醛外壳、后盖板；铁钕硼强磁铁；不锈钢铁片。  
Material: Polyformaldehyde shell and back cover; Neodymium alloyed with iron and boron-NiB strong magnets; stainless steel steel parts.





(3mm不带定位点)



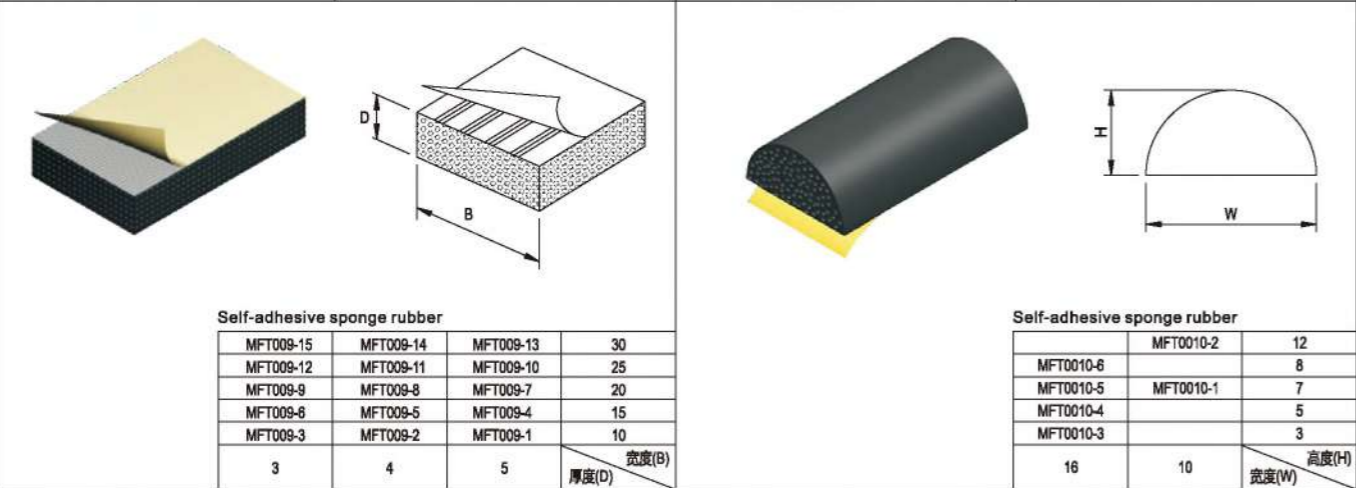
(3mm带定位点)



(4mm不带定位点)



(4mm带定位点)



Self-adhesive sponge rubber

MFT009-15	MFT009-14	MFT009-13	30
MFT009-12	MFT009-11	MFT009-10	25
MFT009-9	MFT009-8	MFT009-7	20
MFT009-6	MFT009-5	MFT009-4	15
MFT009-3	MFT009-2	MFT009-1	10
3	4	5	厚度(D) 宽度(B)

Self-adhesive sponge rubber

MFT0010-2	12
MFT0010-6	8
MFT0010-5	7
MFT0010-4	5
MFT0010-3	3
16	10
	高度(H) 宽度(W)

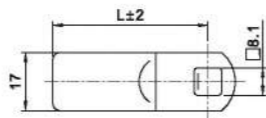
钢栓代号 Cam type	折弯高度 (BH)	中心距 (L)	钢栓代号 Cam type	折弯高度 (BH)	中心距 (L)
S1B3000	0	30	S1B4512	12	45
S1B3002	2	30	S1B4515	15	45
S1B3502	2	35	S1B4517	17	45
S1B3504	4	35	S1B4520	20	45
S1B3507	7	35	S1B4522	22	45
S1B4500	0	45	S1B4527	27	45
S1B4502	2	45	S1B4532	32	45
S1B4504	4	45	S1B4537	37	45
S1B4507	7	45	S1B5302	2	53
S1B4510	10	45	S1B5315	15	53

材 料：碳钢。  
表面处理：镀锌。  
Material: M.S. cam.  
Finish: Zinc plated.

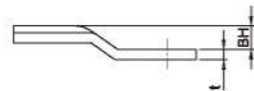
### S1G系列



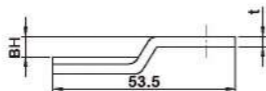
材料：碳钢。  
表面处理：镀锌。  
Material: M.S. cam.  
Finish: Zinc plated.



正向锁片  
Reversed cam



反向锁片  
Offset cam

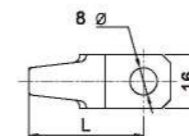


锁片代号 Camstyle	折弯高度 (BH)	中心距 (L)	厚度 (t)
S1G4220	20	42	4
S1G5013	13	50	4
S1G4512	12	45	3
S1G5007	7	50	3
S1G4507	7	45	3
S1G4509	-9	45	3
S1G4509	-9	50	3

### S1K系列



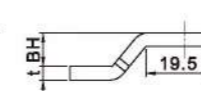
材料：碳钢。  
表面处理：镀锌。  
Material: M.S. cam.  
Finish: Zinc plated.



正向锁片  
Reversed cam



反向锁片  
Offset cam

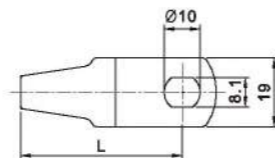


锁片代号 Camstyle	折弯高度 (BH)	中心距 (L)	厚度 (t)
S1K3400	0	34	4
S1K3405	5	-5	4
S1K3410	10	-10	4
S1K4613	13	-13	4
S1K3415	15	-15	4

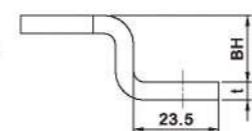
### S1H系列



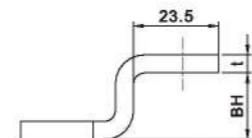
材料：碳钢。  
表面处理：镀锌。  
Material: M.S. cam.  
Finish: Zinc plated.



正向锁片  
Reversed cam



反向锁片  
Offset cam



锁片代号 Camstyle	折弯高度 (BH)	中心距 (L)	厚度 (t)
S1H3300	0	33	5
S1H3800	0	38	5
S1H4500	0	45	5
S1H4000	0	40	4
S1H4518	18	-18	5
S1H4228	28	-28	5

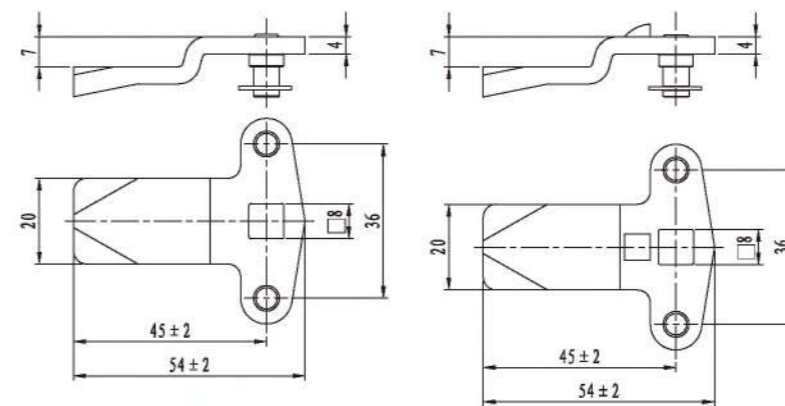
### S3B系列



(不带定位点)

(带定位点)

材料：碳钢。  
表面处理：镀锌。  
Material: M.S. cam.  
Finish: Zinc plated.

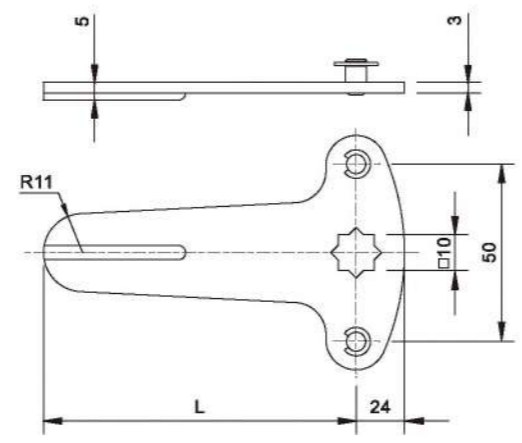


钢栓代号	折弯高度 (BH)	中心距 (L)
S3B4500	0	45
S3B4504	4	45
S3B4507	7	45
S3B4510	10	45
S3B4512	12	45
S3B4514	14	45
S3B4520	20	45

S3C系列



材 料：碳钢。  
表面处理：镀锌。  
Material: M.S. cam.  
Finish: Zinc plated.

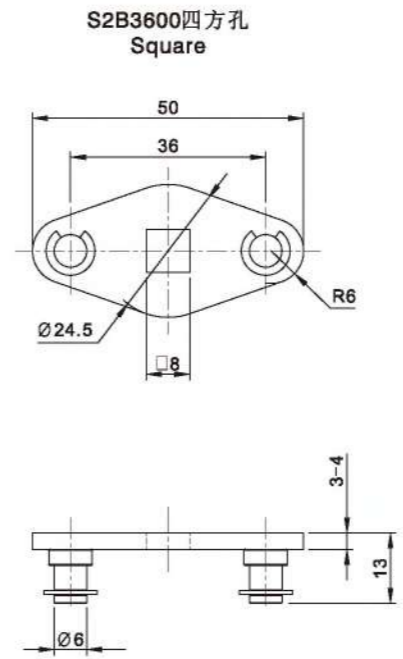


钢栓代号	折弯高度 (BH)	中心距 (L)
S3C5000	0	50
S3C7000	0	70
S3C8800	0	88

S2B3600



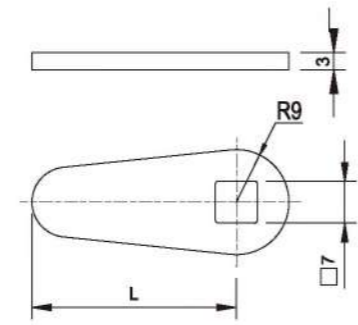
材 料：碳钢。  
表面处理：镀锌。  
Material: M.S. cam.  
Finish: Zinc plated.



S1A系列



材 料：碳钢。  
表面处理：镀锌。  
Material: M.S. cam.  
Finish: Zinc plated.

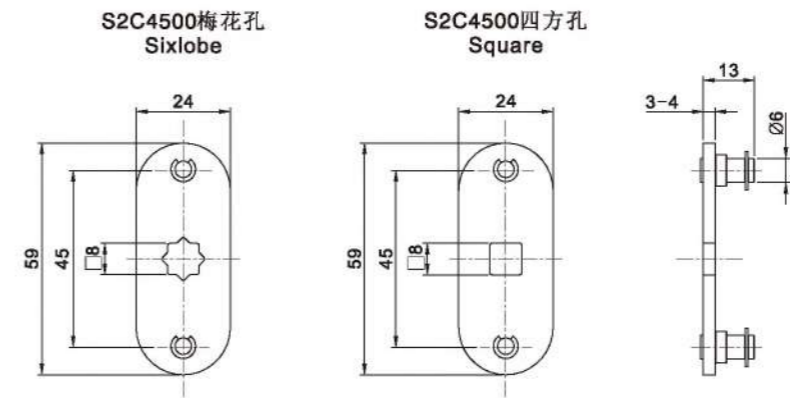


钢栓代号	折弯高度 (BH)	中心距 (L)
S1A3500	0	35
S1A3900	0	39
S1A7200	0	72

S2C4500



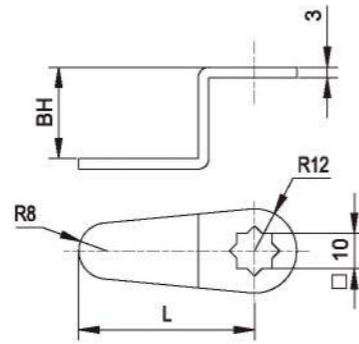
材 料：碳钢。  
表面处理：镀锌。  
Material: M.S. cam.  
Finish: Zinc plated.



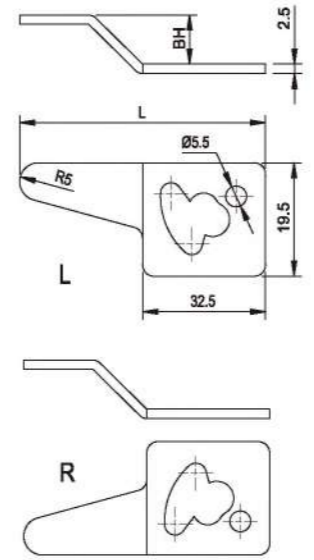
S1C系列



材 料：碳钢。  
表面处理：镀锌。  
Material: M.S. cam.  
Finish: Zinc plated.



钢栓代号	折弯高度 (BH)	中心距 (L)
S1C3509	09	35
S1C4000	0	40
S1C5000	0	50
S1C5026	26	50
S1C7200	0	72



钢栓代号	折弯高度 (BH)	中心距 (L)
AS1D7200	0	72
AS1D6810	10	68
AS1D6613	13	66
AS1D6317	17	63

S1D系列

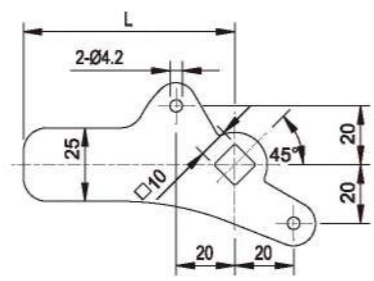


材 料：碳钢。  
表面处理：镀锌。  
Material: M.S. cam.  
Finish: Zinc plated.

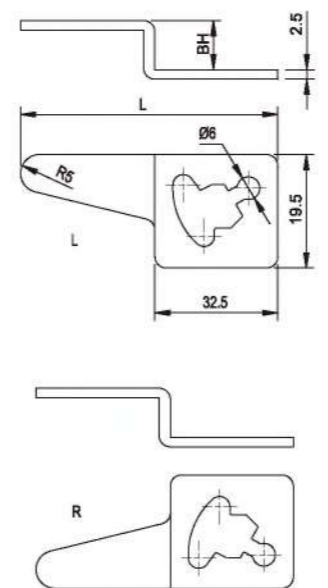
AS3C系列



材 料：碳钢。  
表面处理：镀锌。  
Material: M.S. cam.  
Finish: Zinc plated.



钢栓代号	折弯高度 (BH)	中心距 (L)
AS3B6500	0	65
AS3B7200	0	72
AS3B10000	0	100
AS3B14000	0	140



钢栓代号	折弯高度 (BH)	中心距 (L)
S1D7200	0	72
S1D6810	10	68
S1D6613	13	66
S1D6317	17	63

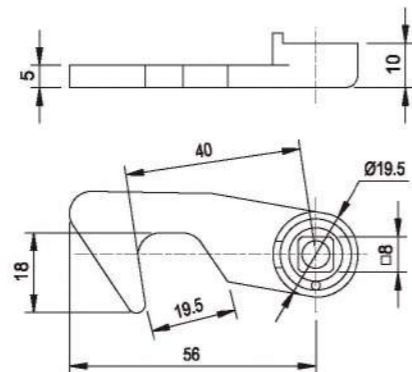
S1F系列



材 料：碳钢。  
表面处理：镀锌。  
Material: M.S. cam.  
Finish: Zinc plated.

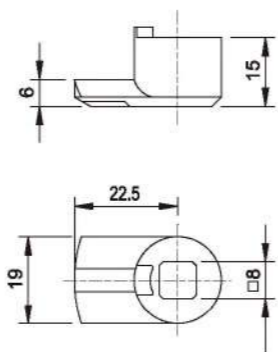


S1B5600A



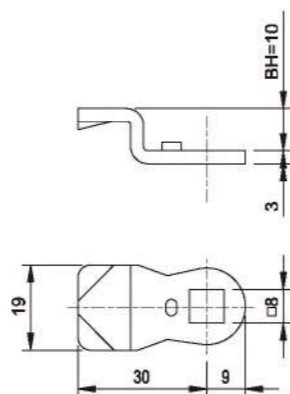
自动复位式钢栓 • Automatic reset lock plate

S1B2209B



锌合金钢栓 • Zinc Alloy lock plate

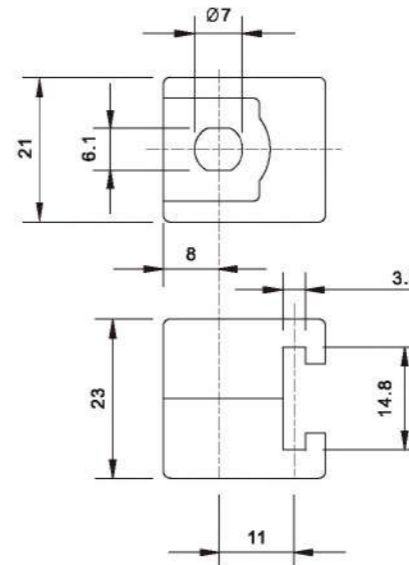
S1B30-10



成型反方向钢栓 • Forming the opposite direction lock plate

材料：碳钢。  
表面处理：镀锌。  
Material: M.S. cam.  
Finish: Zinc plated.

RG1010-1

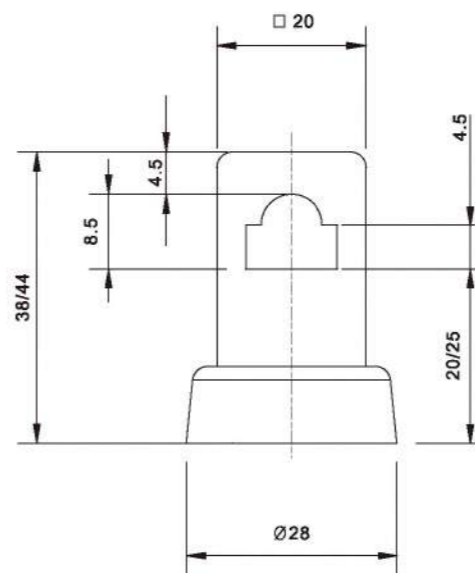


材料：尼龙  
Material: Nylon

RG1010-2

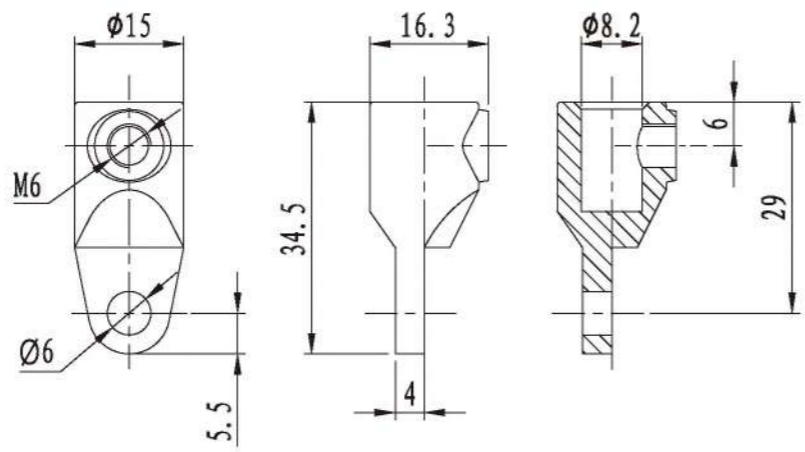


RG1010-3



材料：尼龙  
Material: Nylon

RG1020-1



材 料：锌合金  
Material: Zinc alloy.

齿型垫



M8内多齿



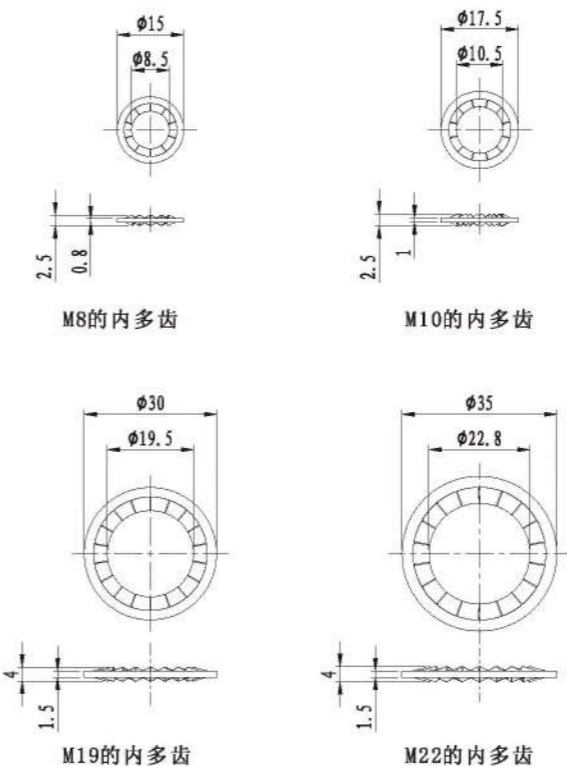
M10内多齿



M19内多齿



M22内多齿



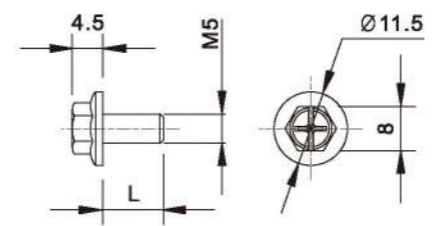
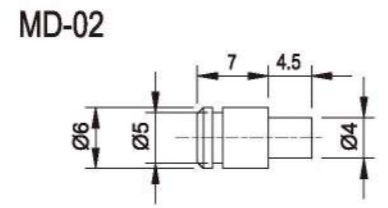
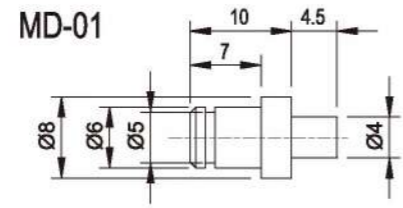
柳钉



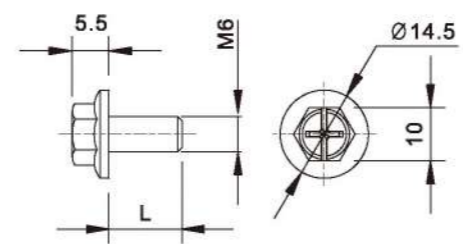
MD-01



MD-02



L=6/8/10/12/14/16

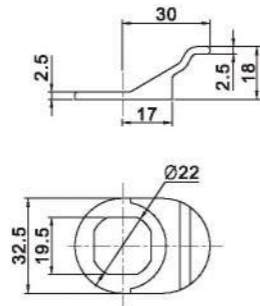


L=6/8/10/12/14/16

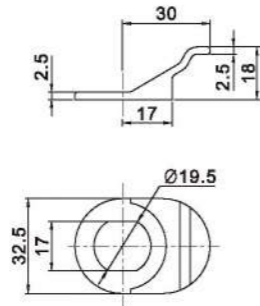
螺钉



PL-01

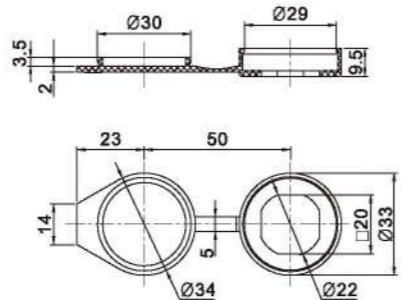


PL-02

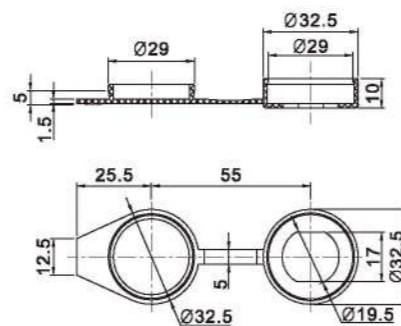


Material: PA

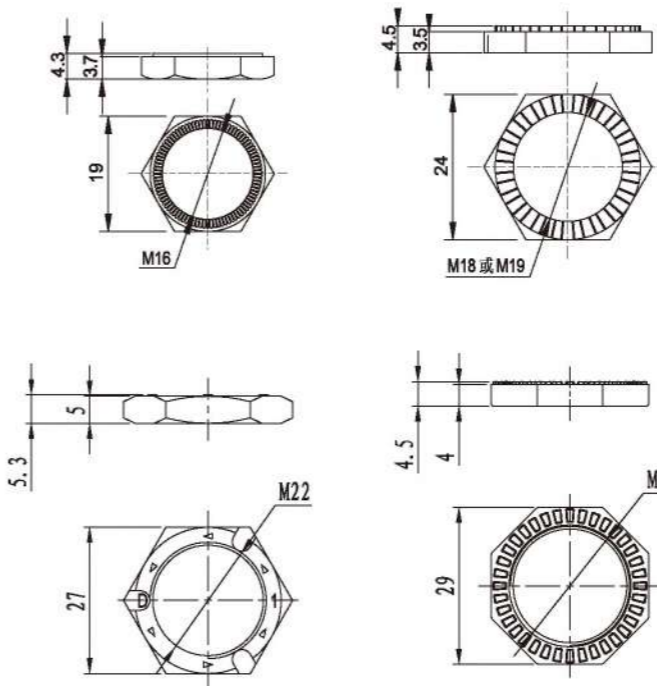
PL-03



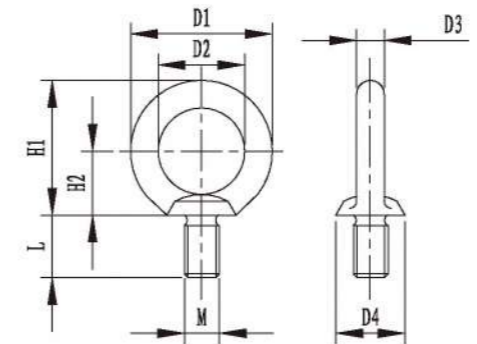
PL-04



Material: PA



材 料：锌合金  
Material: Zinc alloy.



吊环代号	L	H1	H2	D1	D2	D3	D4	M
DH1000-M8	15	33.3	17	32.6	20	6.3	16	8
DH1000-M10	18	41.5	21	41	25	8	20	10
DH1000-M12	22	51	26	50	30	10	25	12
DH1000-M16	27	60	30	60	35	12.5	30	16
DH1000-M20	30	71	35	72	40	16	35	20
DH1000-M22	34	84	43	81	44	18	40	22
DH1000-M24	38	90	50	90	50	20	45	24
DH1000-M30	45	110	55	110	60	25	60	30
DH1000-M36	55	131.5	65	133	70	31.5	70	36

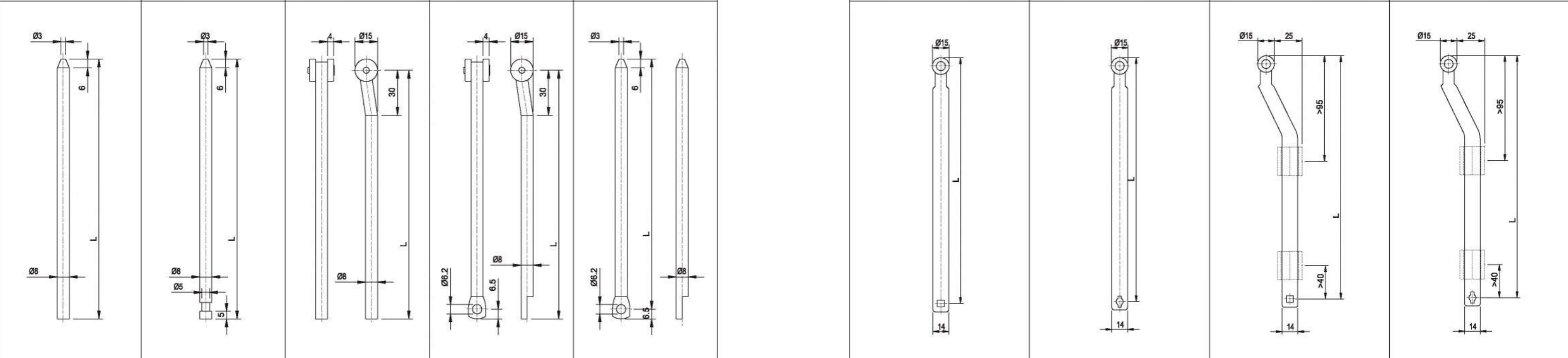
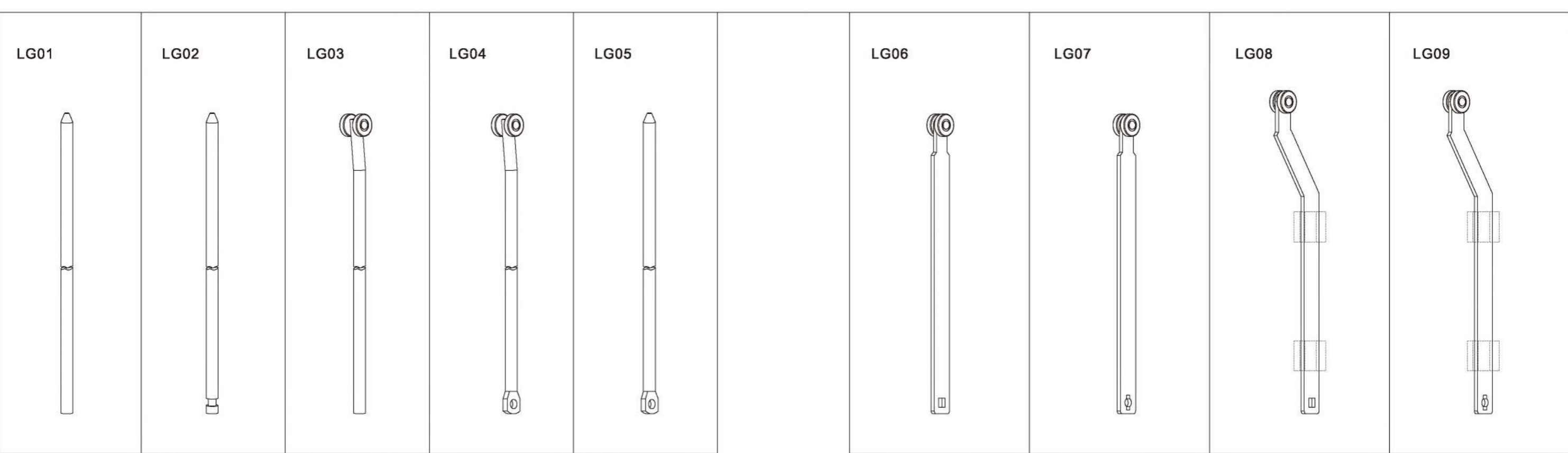
DH1000系列



DM1000系列



材 料：碳钢  
Material: M.S.



LG01-1100	1100
LG01-1000	1000
LG01-900	900
LG01-800	800
LG01-700	700
LG01-600	600
LG01-500	500
连杆代号	L

LG02-1100	1100
LG02-1000	1000
LG02-900	900
LG02-800	800
LG02-700	700
LG02-600	600
LG02-500	500
连杆代号	L

LG03-1100	1100
LG03-1000	1000
LG03-900	900
LG03-800	800
LG03-700	700
LG03-600	600
LG03-500	500
连杆代号	L

LG04-1100	1100
LG04-1000	1000
LG04-900	900
LG04-800	800
LG04-700	700
LG04-600	600
LG04-500	500
连杆代号	L

LG05-1100	1100
LG05-1000	1000
LG05-900	900
LG05-800	800
LG05-700	700
LG05-600	600
LG05-500	500
连杆代号	L

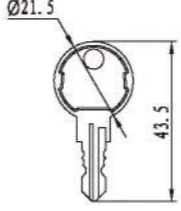
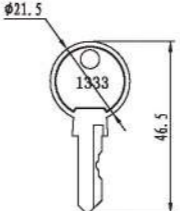
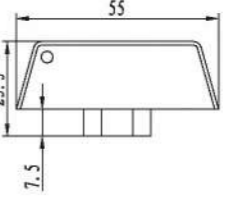
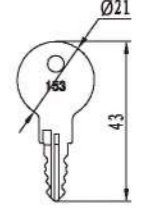


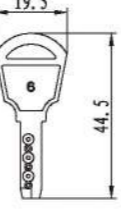

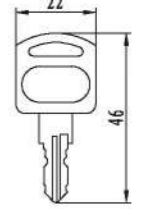
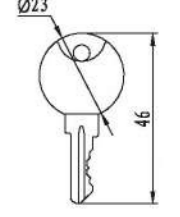
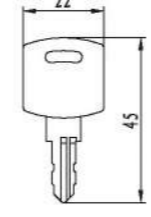
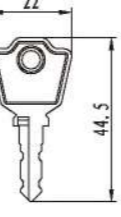
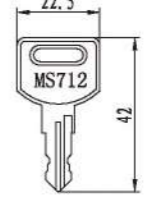
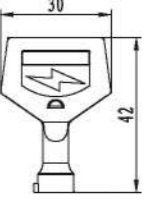
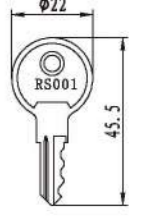
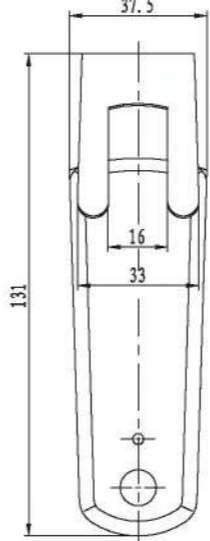
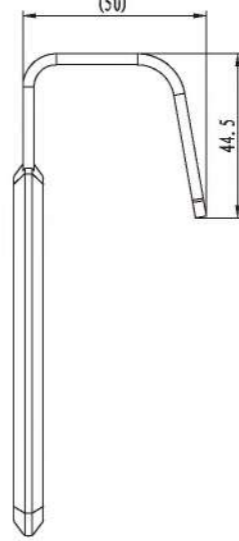
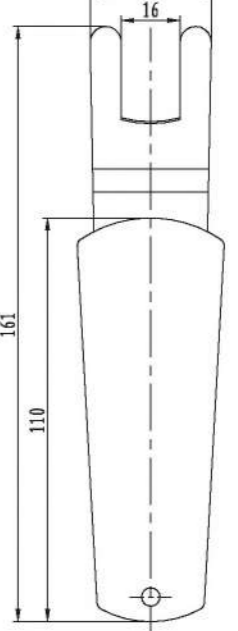
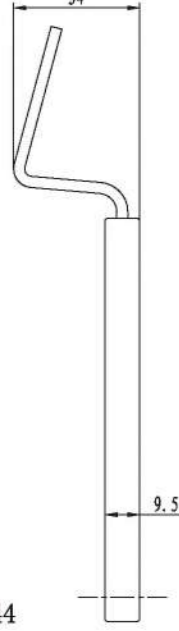
LG06-1100	1100
LG06-1000	1000
LG06-900	900
LG06-800	800
LG06-700	700
LG06-600	600
LG06-500	500
连杆代号	L

LG07-1100	1100
LG07-1000	1000
LG07-900	900
LG07-800	800
LG07-700	700
LG07-600	600
LG07-500	500
连杆代号	L

LG08-1100	1100
LG08-1000	1000
LG08-900	900
LG08-800	800
LG08-700	700
LG08-600	600
LG08-500	500
连杆代号	L

LG09-1100	1100
LG09-1000	1000
LG09-900	900
LG09-800	800
LG09-700	700
LG09-600	600
LG09-500	500
连杆代号	L

				
YS01	YS02	YS03	YS04	YS05
				
YS06	YS07	YS11	YS12	YS13
				
YS14	YS15	YS16	YS17	YS18
				
YS19	YS20一字	YS20六角8	YS21	YS22
				
YS四方和圆点	YS24	YS25	YS26	YS27

				
YS28	YS29	YS30	YS31	YS32
				
YS33	YS34	YS35	YS36	YS37
				
YS38	YS39	YS40	YS41	YS42
				
YS43	YS43	YS44	YS44	

 <p>YS08一字</p>	 <p>YS08三角</p>	 <p>YS08四方</p>	 <p>YS09一字</p>	 <p>YS09三角</p>
 <p>YS09四方</p>	 <p>YS10一字</p>	 <p>YS09D三角</p>	 <p>YS09D四方</p>	 <p>YS10D一字</p>
 <p>MS7070-1锁芯</p>	 <p>MS7060-1锁芯</p>	 <p>MS7100-1锁芯</p>	 <p>MS3000-1锁芯</p>	 <p>MS7039-1G锁芯</p>
 <p>MS1030-1锁芯</p>	 <p>MS7042-1锁芯</p>	 <p>MS1040-2锁芯</p>	 <p>MS7026-1G锁芯</p>	 <p>MS7017-1锁芯</p>

По вопросам продаж и поддержки обращайтесь:

Архангельск (8182)63-90-72	Калининград (4012)72-03-81	Нижний Новгород (831)429-08-12	Смоленск (4812)29-41-54
Астана +7(7172)727-132	Калуга (4842)92-23-67	Новокузнецк (3843)20-46-81	Сочи (862)225-72-31
Белгород (4722)40-23-64	Кемерово (3842)65-04-62	Новосибирск (383)227-86-73	Ставрополь (8652)20-65-13
Брянск (4832)59-03-52	Киров (8332)68-02-04	Орел (4862)44-53-42	Тверь (4822)63-31-35
Владивосток (423)249-28-31	Краснодар (861)203-40-90	Оренбург (3532)37-68-04	Томск (3822)98-41-53
Волгоград (844)278-03-48	Красноярск (391)204-63-61	Пенза (8412)22-31-16	Тула (4872)74-02-29
Вологда (8172)26-41-59	Курск (4712)77-13-04	Пермь (342)205-81-47	Тюмень (3452)66-21-18
Воронеж (473)204-51-73	Липецк (4742)52-20-81	Ростов-на-Дону (863)308-18-15	Ульяновск (8422)24-23-59
Екатеринбург (343)384-55-89	Магнитогорск (3519)55-03-13	Рязань (4912)46-61-64	Уфа (347)229-48-12
Иваново (4932)77-34-06	Москва (495)268-04-70	Самара (846)206-03-16	Челябинск (351)202-03-61
Ижевск (3412)26-03-58	Мурманск (8152)59-64-93	Санкт-Петербург (812)309-46-40	Череповец (8202)49-02-64
Казань (843)206-01-48	Набережные Челны (8552)20-53-41	Саратов (845)249-38-78	Ярославль (4852)69-52-93

сайт: [www.dele.nt-rt.ru](http://www.dele.nt-rt.ru) || эл. почта: [dfе@nt-rt.ru](mailto:dfе@nt-rt.ru)